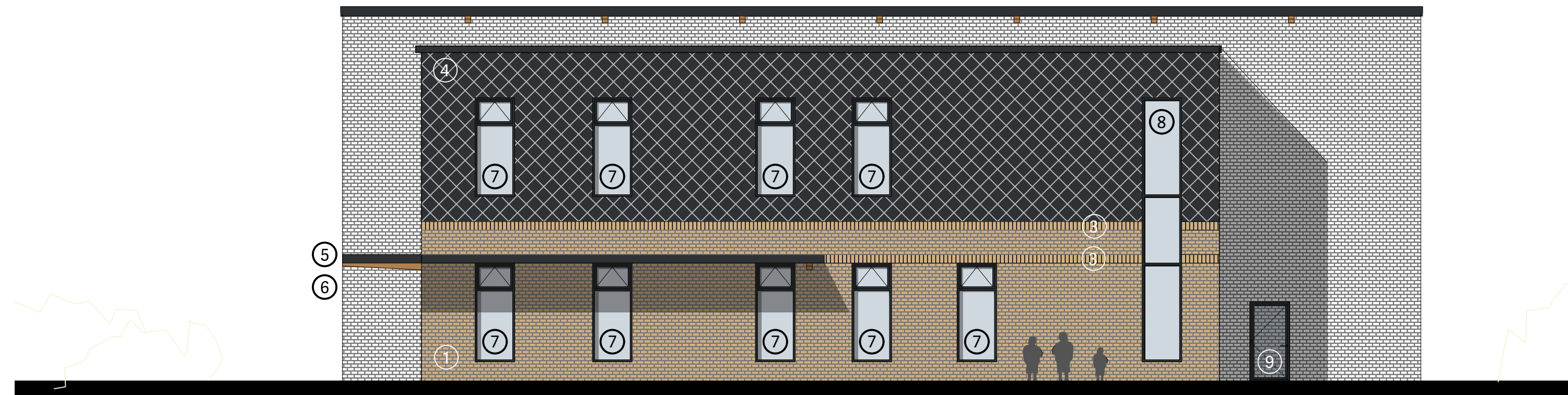
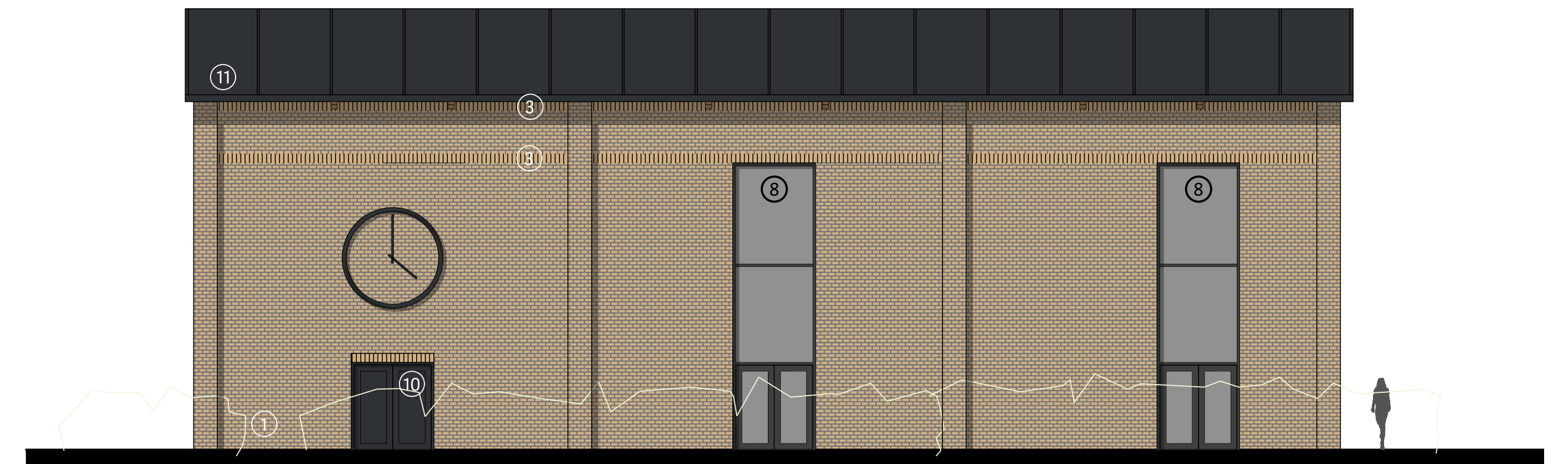


Proposed West Elevation (Main)



Proposed South Elevation



Proposed North Elevation



Proposed East Elevation

- ① Buff Brickwork outer face with light mortar - Stretcher bond
Structure proposed as timber hybrid with timber infill or similar.
- ② Inset buff brickwork detailing to continue vertical axis of elevation
- ③ Solider course detail to intersect the mass of stretcher bond brickwork.
- ④ Zinc finished Kingspan SH shingle cladding
- ⑤ Roof canopy with aluminium flashing - RAL7021 or similar
- ⑥ Natural timber tapered glulam beam to support roof canopy
- ⑦ Timber/ Aluminium Hybrid windows and doors - RAL7021 (outer) or similar
- ⑧ Timber hybrid curtain walling - RAL7021 (outer) or similar
- ⑨ Aluminium glazed door - RAL7021 or similar
- ⑩ Steel service door - RAL7021 or similar
- ⑪ Zinc finished roof panels with flashing detail to perimeter - RAL7021 or similar

STOAS Architects Ltd
PLANNING

STOAS ARCHITECTS
BLOOR HOMES

THE LODGE - COLESHILL MANOR - BIRMINGHAM - B46 1DL - TEL 0121 747 1943
1 DUNSTON PLACE - DUNSTON ROAD - CHESTERFIELD - S41 8NL - TEL 01246 389 860

CLIENT BLOOR HOMES WESTERN

PROJECT FRANKLEY PRIMARY SCHOOL

TITLE PROPOSED ELEVATIONS

DATE 03/02/22 SCALE 1:100 @ A1

DRAWN AF CHECKED AHP

NORTH

DWG No. 21_2625 - Zz_70_30 - 0001 REVISION P01



Precedent Images

12m
10
8
6
4
2
0
Scale 1:100

ALL INFORMATION IS BELIEVED TO BE CORRECT AT THE TIME OF PRINTING. STOAS ARCHITECTS LTD ACCEPTS NO LIABILITY FOR ANY ERRORS OR OMISSIONS. THE DRAWING IS THE PROPERTY OF STOAS ARCHITECTS LTD AND IS NOT TO BE REPRODUCED OR TRANSMITTED IN ANY FORM OR BY ANY MEANS, ELECTRONIC OR MECHANICAL, INCLUDING PHOTOCOPYING, RECORDING, OR BY ANY INFORMATION STORAGE AND RETRIEVAL SYSTEM, WITHOUT THE WRITTEN CONSENT OF STOAS ARCHITECTS LTD.